



G9 Offshore Wind Health and Safety Association

Management of service vessels

Dr Roland Gutbrod
Senior Manager HSE & S, RWE Innogy
G9 Workstream Leader

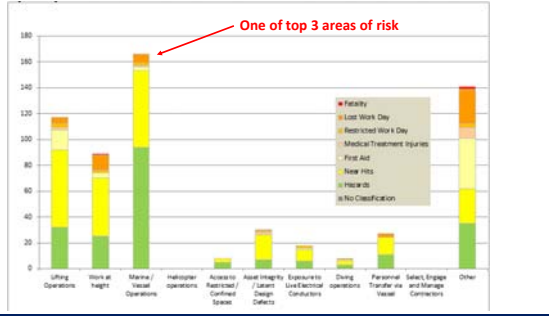




Why marine operations?

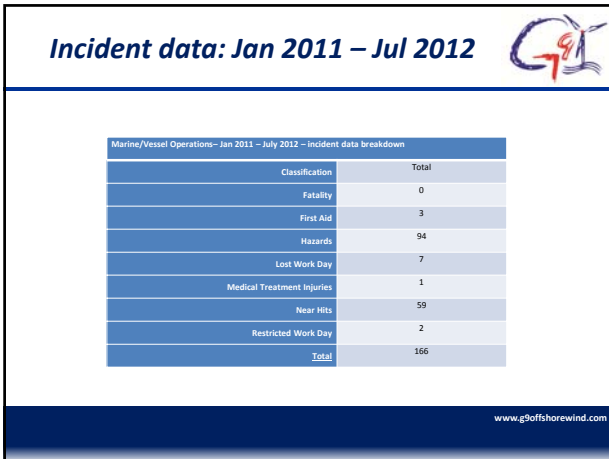
www.g9offshorewind.com

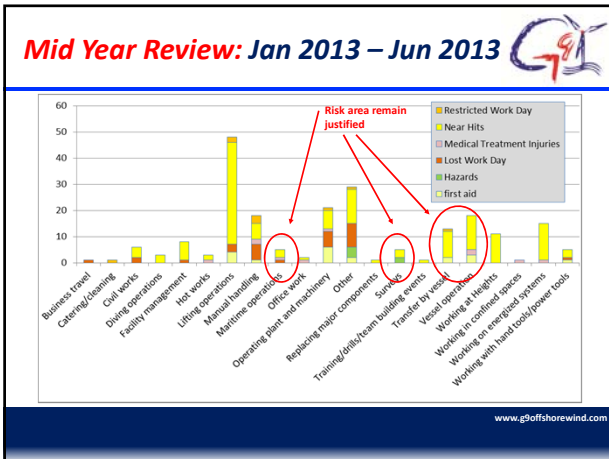
Incident data: Jan 2011 – Jul 2012



Activity	Incidents
Lifting Operations	~100
Work at Height	~80
Marine/Vessel Operations	~160
Helicopter operations	~10
Access to Restricted Areas	~5
Asset Integrity Checks	~15
Exposure to Noise	~10
Diving	~5
Personnel Transfer and Storage	~10
Other	~140

www.g9offshorewind.com






Some details from incidents


- Crew transfer vessel (CTV) failed to respond to calls on VHF and UHF whilst entering the 500m zone of a dive support vessel (DSV) without permission. Dive ops were on-going at the time.
- Ship ran aground 450 metres from one of the turbines.
- Worker twisted foot on ship during fire extinguishing of distressed fishing boat near site
- Loss of VHF radio communications between control room and transfer vessel within the windfarm. Two radio sets in the control were tried with neither able to contact the vessel in the farm.
- Crew transfer vessels instructed to transit to field in 2m Hs seas when the personnel transfer limit is 1.5m Hs.

www.g9offshorewind.com

Some details from incidents 

- The CTV entered the 500m zone of the installation vessel without permission. There was no declaration of intent. The CTV struck the installation vessel, damaging the ranger pole, boat ladder & taut wire.
- The deckhand did not clip to the guard rail when the safety chain on the vessel was removed whilst assisting with TP ladder descent.
- During sequence control works two persons transferred from the transition piece to the transfer vessel without wearing life jackets.
- The skipper of support 2 noticed that a seal on the exhaust cooling system was leaking causing water ingress to the vessel.

www.g9offshorewind.com



Clear need for guidance in this area

www.g9offshorewind.com



Guidelines for the management of service vessels

Martin Crawford-Brunt
and Peter Flower
DNV

centrica energy DDNG e-on RWE SSE Statkraft Skarhall VATTENFALL



MANAGING RISK 


Safeguarding life, property and the environment

www.dnv.com




www.g9offshorewind.com

Guideline Development



DNV Review of G9 Procedures Drafting of Guideline Mid-November Formal Consultation Process Q1 2014 Publication of Guideline

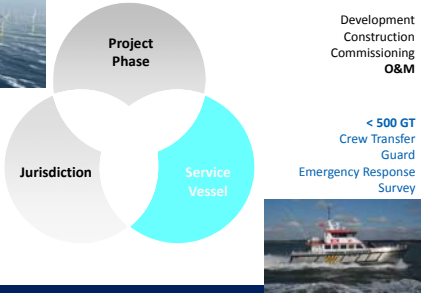



1 2 3 4 5 6 7

DNV Review of Legislation & Guidelines Targeted Consultation & Working Group Review Review Workshop Mid-January

www.g9offshorewind.com


Area of Application



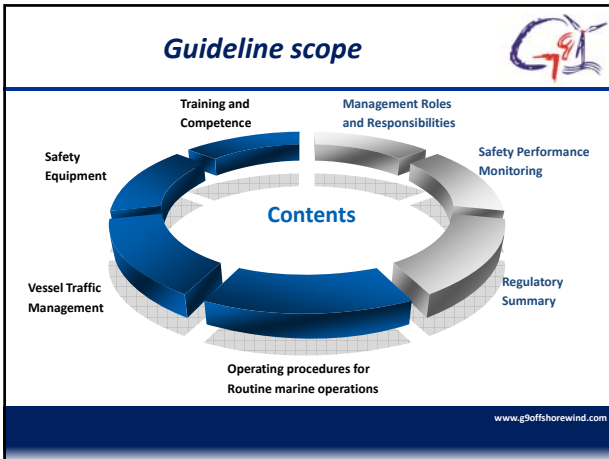
Development
Construction
Commissioning
O&M

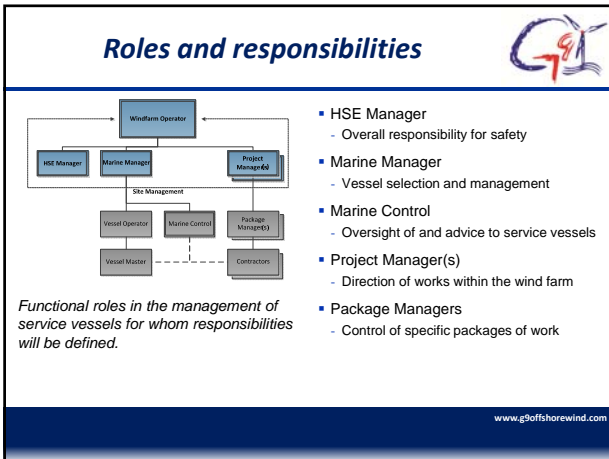
< 500 GT
Crew Transfer
Guard
Emergency Response
Survey

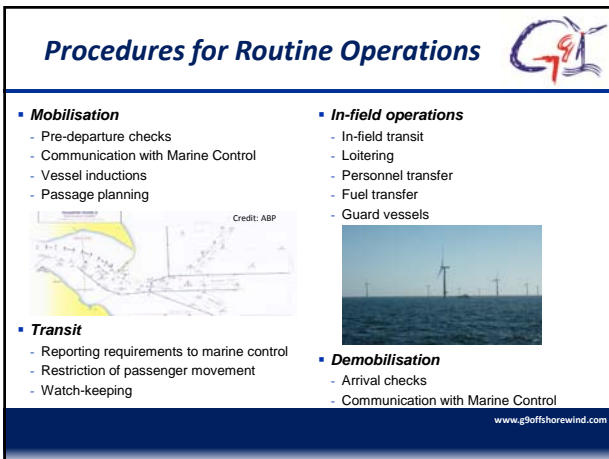
UK
Denmark
Germany
...



www.g9offshorewind.com







Control Measures

Marine Control	Service Vessel
<ul style="list-style-type: none"> ▪ Organisation and functions <ul style="list-style-type: none"> - Responsibilities - Advice to masters & operating instructions ▪ Competence & training <ul style="list-style-type: none"> - IALA recommendation V-103 ▪ Vessel traffic management <ul style="list-style-type: none"> - Guidance for agreeing recommended routes with local authorities - Safety and exclusion zones for windfarm traffic - Non-windfarm traffic 	<ul style="list-style-type: none"> ▪ Crew resource management <ul style="list-style-type: none"> - Watch-keeping - Hours of rest - Competence & training ▪ Safety equipment <ul style="list-style-type: none"> - Safety of navigation - Safety of personnel ▪ Passenger certification requirements

www.g9offshorewind.com

The Regulatory Challenge

<p>Not high speed. Steel construction. International voyage Convention Vessels</p>	<p>Transfer of technicians/ equipment not envisaged. HSC point to point Permit to operate</p>
<p>SPS Code Intended for persons remaining onboard Based on SOLAS</p>	<p>Domestic Standards</p> <p>EU passenger vessel directive > 12 persons</p>

www.g9offshorewind.com

Discussion points

<ul style="list-style-type: none"> • Vessel Operator Management Systems <ul style="list-style-type: none"> - Mini-ISM for service vessels? • Master's Certification <ul style="list-style-type: none"> - STCW or Authority CoC? • Marine Control Certification <ul style="list-style-type: none"> - IALA V-103 VTS training. • Navigational Safety Equipment <ul style="list-style-type: none"> - AIS and ECDIS required as standard? • In-field speed restrictions <ul style="list-style-type: none"> - Linked to visibility 	
--	--

www.g9offshorewind.com